



OBERDORFER®

An Ingersoll Rand Business

N992 Series Bronze Close Coupled Rotary Gear Pumps

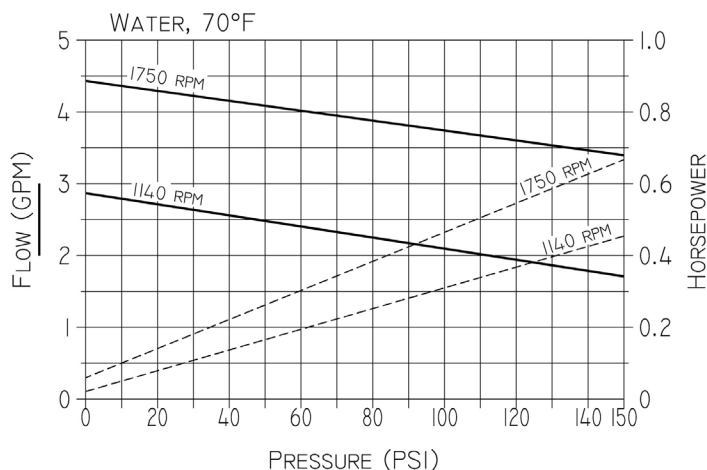


Features

- 3/8" NPT Ports
- Temp. Range: 32°F - 140°F
- Rugged corrosion resistant bronze construction
- Compact close-coupled design
- Stainless steel shafts
- Durable bronze helical gears provide quiet operation
- Process lubricated carbon graphite bearings
- O-ring cover seal for maximum leak protection
- Lip seal or Mechanical Seal
- Easy field assembly to a variety of motor frames
- For DC motor pump units - see N992 DC
- For compact AC motor pump units - see Bronze Adapterless Rotary Gear Pumps
- Danfoss hydraulic motor driven pump units see adapter OB9960

PUMP	DESCRIPTION
OBN992	Standard Pump with 3/8" ports
OBN992R	Pump with 3/8" ports & relief valve
OBN992S5	Pump with FKM lipseal
OBN992RS5	Pump with FKM lipseal & relief valve
OBN992S16	Pump with NBR mechanical seal
OBN992RS16	Pump with NBR mechanical seal & relief valve
OBN992S17	Pump with FKM mechanical seal
OBN992RS17	Pump with FKM mechanical seal & relief valve
OBN992S18	Pump with PTFE mechanical seal
OBN992RS18	Pump with PTFE mech. seal & relief valve
OBN992S8	Pump with EPDM mechanical seal
OBN992RS8	Pump with EPDM mech. seal & relief valve

Performance



General Description

Pump housings and gears are made of top quality bronze, shafts are 303 stainless steel. Bearings are designed of high performance carbon-graphite material selected for wear resistance and long service life. Gear pumps are positive displacement pumps. Each shaft revolution displaces a definite amount of liquid relatively unaffected by the back pressure in the discharge line. Shaft speed and flow are directly proportional. Recommended pressure limits are 100 PSI for water and non-lubricants, 150 PSI for oil and other lubricants. The maximum shaft speed is 1750 RPM.

Shaft Seals

Close coupled gear pumps are normally supplied with a NBR lip seal. For a FKM Seal, add S5 to the pump model number. For a NBR Mechanical seal add S16 and for a FKM Mechanical Seal add S17. For a PTFE mechanical seal add S18. For a EPDM mechanical seal add S8.

Liquids and Temperature

These pumps are suitable for all liquids that are compatible with bronze. Most common liquids are water, oil, and mild chemicals in the pH range of 4 to 11. Viscous liquids require reduced shaft speeds of 1140 RPM or lower. (Consult factory.)

Liquids containing solids, abrasives, powders, or paint pigments are definitely not recommended for gear pumps. If abrasives are unavoidable, use a very low shaft speed. The recommended liquid temperature range is from 32° F to 140° F for best pump life. If more extreme temperature conditions exist, factory should be consulted. Freezing of water-filled pumps can cause damage and must be avoided. Oils at low temperatures are very viscous requiring a lower speed or extra power.

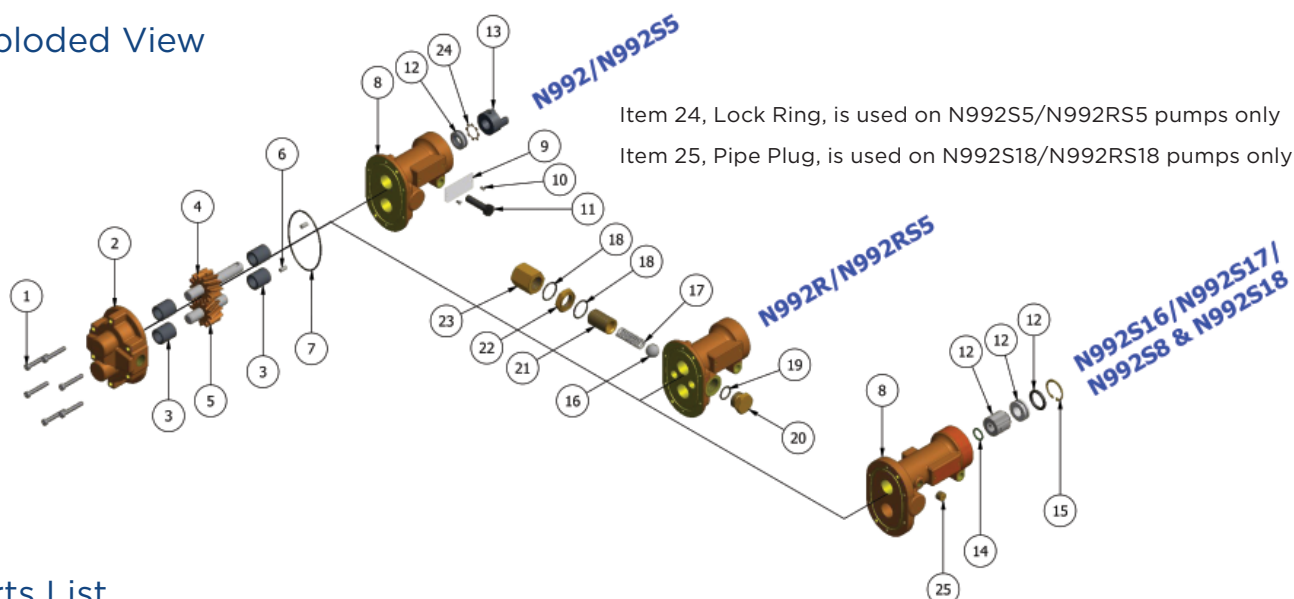




OBERDORFER®

An Ingersoll Rand Business

Exploded View



Parts List

	1	2	3	4	5	6	7	8	9	10	11	12		13	14
	Screw	Body	Bearing	Drive Gear Assy	Idle Gear Assy	Dowel Pin	O-Ring	Cover	Tag	Tag Screw	Screw	Lipseal	Mech. Seal	Coupling Half	Retaining Ring
Model	Qty. 6	Qty. 1	Qty. 4	Qty. 1	Qty. 1	Qty. 2	Qty. 1	Qty. 1	Qty. 1	Qty. 2	Qty. 1	Qty. 1	Qty. 1	Qty. 1	Qty. 1
OBN992	OB7733	OB9306NC5N	OB5024	OB32994	OB32993	OB8885	OB9797-038	OB9308NN2N	OB9344	OB9345	OB5595	OB5007	N/A	OB5604	N/A
OBN992R	OB7733	OB9306NC5N	OB5024	OB32994	OB32993	OB8885	OB9797-038	OB9308NN3B	OB9344	OB9345	OB5595	OB5007	N/A	OB5604	N/A
OBN992S5	OB7733	OB9306NC5N	OB5024	OB32994	OB32993	OB8885	OB9797-038	OB9308NN2N	OB9344	OB9345	OB5595	OB7580	N/A	OB5604	N/A
OBN992RS5	OB7733	OB9306NC5N	OB5024	OB32994	OB32993	OB8885	OB9797-038	OB9308NN3B	OB9344	OB9345	OB5595	OB7580	N/A	OB5604	N/A
OBN992S16	OB7733	OB9306NC5N	OB5024	OB33341	OB32993	OB8885	OB9797-038	OB9309PN4N	OB9344	OB9345	OB5595	N/A	OB32584	OB5604	OB5373
OBN992RS16	OB7733	OB9306NC5N	OB5024	OB33341	OB32993	OB8885	OB9797-038	OB9309PN4B	OB9344	OB9345	OB5595	N/A	OB32584	OB5604	OB5373
OBN992S17	OB7733	OB9306NC5N	OB5024	OB33341	OB32993	OB8885	OB9797-038	OB9309PN4N	OB9344	OB9345	OB5595	N/A	OB32585	OB5604	OB5373
OBN992RS17	OB7733	OB9306NC5N	OB5024	OB33341	OB32993	OB8885	OB9797-038	OB9309PN4B	OB9344	OB9345	OB5595	N/A	OB32585	OB5604	OB5373
OBN992S18	OB7733	OB9306NC5N	OB5024	OB33341	OB32993	OB8885	OB9355-038	OB9309PN6N	OB9344	OB9345	OB5595	N/A	OB32335	OB5604	OB5373
OBN992RS18	OB7733	OB9306NC5N	OB5024	OB33341	OB32993	OB8885	OB9355-038	OB9309PN6B	OB9344	OB9345	OB5595	N/A	OB32335	OB5604	OB5373
OBN992S8	OB7733	OB9306NC5N	OB5024	OB33341	OB32993	OB8885	OB9999-038	OB9309PN4N	OB9344	OB9345	OB5595	N/A	OB32754	OB5604	OB5373
OBN992RS8	OB7733	OB9306NC5N	OB5024	OB33341	OB32993	OB8885	OB9999-038	OB9309PN4B	OB9344	OB9345	OB5595	N/A	OB32754	OB5604	OB5373

	15	16	17	18	19	20	21	22	23	24	25	Repair Kits
	Retaining Ring	Ball	Spring	O-Ring	O-Ring	Nut Plug	Adjust. Screw	Lock Nut	Nut Bypass	Lock Ring	Pipe Plug	
Model	Qty. 1	Qty. 1	Qty. 1	Qty. 2	Qty. 1	Qty. 1	Qty. 1	Qty. 1	Qty. 1	Qty. 1	Qty. 1	
OBN992	N/A	N/A	N/A	N/A	N/A	N/A	N/A	N/A	N/A	N/A	N/A	OB10631
OBN992R	N/A	OB5803	OB1840	OB9797-019	OB9797-015	OB1838	OB5237	OB5240D	OB5239	N/A	N/A	OB10631
OBN992S5	N/A	N/A	N/A	N/A	N/A	N/A	N/A	N/A	N/A	OB7626	N/A	OB11351
OBN992RS5	N/A	OB5803	OB1840	OB9797-019	OB9797-015	OB1838	OB5237	OB5240D	OB5239	OB7626	N/A	OB11351
OBN992S16	OB7639	N/A	N/A	N/A	N/A	N/A	N/A	N/A	N/A	N/A	N/A	OB12396
OBN992RS16	OB7639	OB5803	OB6302	OB9797-019	OB9797-015	OB1838	OB5237	OB5240D	OB5239	N/A	N/A	OB12396
OBN992S17	OB7639	N/A	N/A	N/A	N/A	N/A	N/A	N/A	N/A	N/A	N/A	OB12397
OBN992RS17	OB7639	OB5803	OB6302	OB9797-019	OB9797-015	OB1838	OB5237	OB5240D	OB5239	N/A	N/A	OB12397
OBN992S18	OB7639	N/A	N/A	N/A	N/A	N/A	N/A	N/A	N/A	N/A	OB6052	TBD
OBN992RS18	OB7639	OB5803	OB6302	OB9797-019	OB9797-015	OB1838	OB5237	OB5240D	OB5239	N/A	OB6052	TBD
OBN992S8	OB7639	N/A	N/A	N/A	N/A	N/A	N/A	N/A	N/A	N/A	N/A	TBD
OBN992RS8	OB7639	OB5803	OB6302	OB9999-019	OB9999-015	OB1838	OB5237	OB5240D	OB5239	N/A	N/A	TBD

Repair Kits contain items 3, 4, 5, 7, 12, 14, 15 & 24.

Adapter Kits

Adapter Kits		
Adapter Kit	Part Number	Description
M	OB10562	48 Frame
N	OB10816	56 Frame
P	OB11722	S56 Frame
Q	OB11331	56C Frame (to 3/4 HP)
C	OB11331H	56C Frame (above 3/4 HP)
F	OB11332	IEC71
N/A	N/A	Adapterless - Modified 48

IR Ingersoll Rand

12500 South Pulaski Road
Alsip, IL 60803, USA
Phone (800) 448.1668